

Biegestabwägezelle Bending Beam Loadcell

FCAL



Option: Nennlasten: **50, 75, 150, 300 kg**

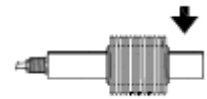
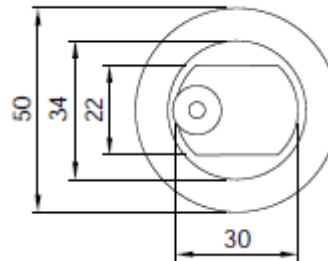
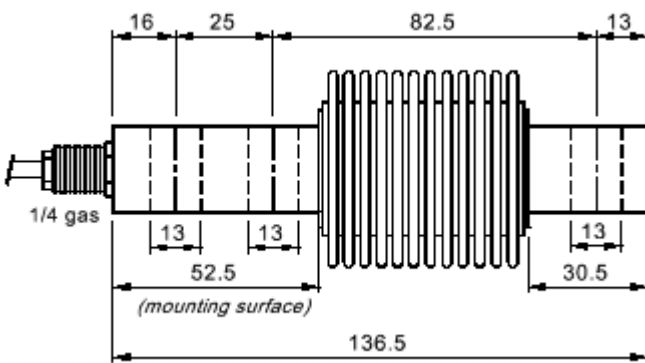


OIML R60 C3 APPROVED

Option: ATEX approved **Ex** II 1 G **Ex** II 2 D (Zugkraft 1-2-3-4-5)



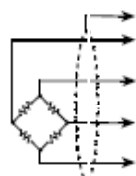
- Wägezelle aus Edelstahl INOX 17-4 PH (X 5 CrNiCuNb 16.4/ 1.4542)
- Kombiniertes Fehler < +/- 0.017 %
- Schutzart IP 68
- Genauigkeitsklasse C3 (OIML R60)
- *Stainless STEEL CONSTRUCTION*
- Combined Error < +/- 0.2% F.S.
- Protection Class IP 68
- ACCURACY CLASS C3 (OIML R60)



technical Features	technische Daten
--------------------	------------------

Rated Output	2mV/V	Wägezellenspannung
Temperature Effect on Zero	0,002%/°C	TK Nullpunkt
Temperature Effect on Span	0,0012%/°C	TK Bereich
Compensated Temperatur Range	-10°C +40°C	Nenntemperaturbereich
Operating Temperature Range	-30°C +65°C	Betriebstemperaturbereich
Input Resistance	400Ω	Input Resistance
Output Resistance	350Ω	Output Resistance
Zero Balance	+/- 2%	Zero Balance
Creep at nominal Load in 30 Minutes	0,016%	Kriechen bei Nennlast in 30 Minuten
DC Voltage Range	15VDC	DC-Spannungsbereich
Insulation Resistance	>5000MΩ	Isolationswiderstand
SAFE OVERLOAD (% of Full Scale)	150%	Überlastschutz (% vom Endwert)
ULTIMATE OVERLOAD (% of Full Scale)	>200%	Bruchlast (% vom Endwert)
Deflection at nominal Load	0,4mm	Nennmessweg

Cable		Kabel
Length	3m	Länge
Diameter	3,8mm	Ø
Cores	4x0,20mm ²	Adern



Shield		Schirm
Signal +	Grün	Signal + Green
Excitation+	Red	Speise + Rot
Signal -	White	Signal - Weiß
Excitation -	Black	Speise - Schwarz

techn. Änderungen vorbehalten