

Biegestabwägezelle Bending Beam Loadcell

FCOL



Nennlast: **20, 50, 100, 200 kg**
350, 500 kg

Option:



- Wägezelle aus Edelstahl INOX 17-4 PH
- Kombiniertes Fehler $\leq \pm 0.02\%$ (0.017% C4)
- Schutzart IP 68
- *Stainless STEEL CONSTRUCTION* INOX 17-4 PH
- Combined Error $\leq \pm 0.02\%$ (0.017% C4)
- Protection Class IP 68

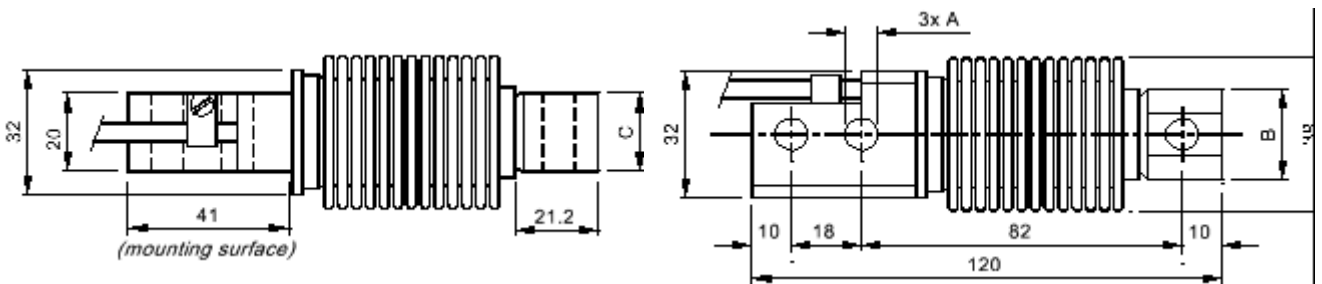


OIML R60 C3 APPROVED

On request OIML R60 C4 version approved

ATEX approved Ex II 1 G Ex II 2 D (zone 0-1-2-21-22)

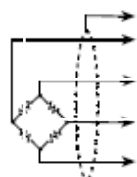
	A	B	C
20 - 200 kg	\varnothing 8.2	23	20
350 - 500 kg	\varnothing 10.3	24	19



technical Features	technische Daten
--------------------	------------------

Rated Output	2mV/V	Wägezellenspannung
Temperature Effect on Zero	0,002%/°C	TK Nullpunkt
Temperature Effect on Span	0,0014%/°C	TK Bereich
Compensated Temperatur Range	-10°C +40°C	Nenntemperaturbereich
Operating Temperature Range	-30°C +650°C	Betriebstemperaturbereich
Input Resistance	460 Ω	Input Resistance
Output Resistance	350 Ω	Output Resistance
Zero Balance	+/- 1%	Zero Balance
Creep at nominal Load in 30 Minutes	0,02%	Kriechen bei Nennlast in 30 Minuten
DC Voltage Range	18VDC	DC-Spannungsbereich
Insulation Resistance	>5000M Ω	Isolationswiderstand
SAFE OVERLOAD (% of Full Scale)	150%	Überlastschutz (% vom Endwert)
ULTIMATE OVERLOAD (% of Full Scale)	>300%	Bruchlast (% vom Endwert)
Deflection at nominal Load	0,4mm	Nennmessweg

Cable		Kabel
Length	3m	Länge
Diameter	5mm	\varnothing
Cores	4/6x0,22mm ²	Adern



Shield	Schirm
Signal +	White
Excitation+	Green
Ref./Sense+	Yellow
Signal -	Red
Excitation -	Black
Ref./Sense -	Blue

techn. Änderungen vorbehalten