

Biegestabwägezelle Nennlast von 30 bis 500kg
 Scherstabwägezelle Nennlast von 750kg bis 1500kg

FCAX

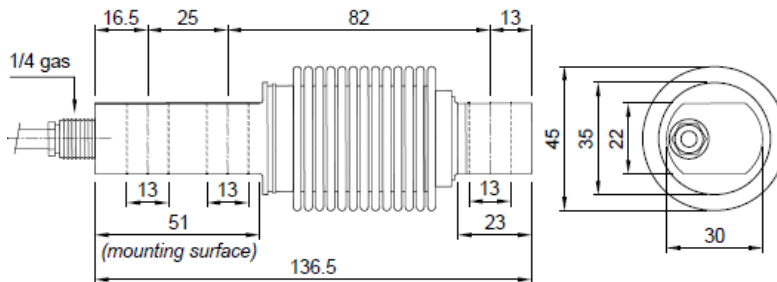


Nennlast: **30, 50, 75, 150, 300, 500, 750, 1000, 1500kg**

Option:



- Wägezelle aus Edelstahl INOX AISI 420
- Kombiniertes Fehler $\leq \pm 0.02\%$
- Schutzart IP 68
- *Stainless STEEL CONSTRUCTION*
- Combined Error $< \pm 0.2\%$ F.S.
- Protection Class IP 68



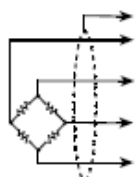
verfügbare Einbauteile



| technical Features | technische Daten |
|--------------------|------------------|
|--------------------|------------------|

| | | |
|-------------------------------------|-------------|-------------------------------------|
| Rated Output | 2mV/V | Wägezellenspannung |
| Temperature Effect on Zero | 0,002%/°C | TK Nullpunkt |
| Temperature Effect on Span | 0,002%/°C | TK Bereich |
| Compensated Temperatur Range | -10°C/+40°C | Nenntemperaturbereich |
| Operating Temperature Range | -30°C/+50°C | Betriebstemperaturbereich |
| Input Resistance | 460Ω | Input Resistance |
| Output Resistance | 350Ω | Output Resistance |
| Zero Balance | +/- 1% | Zero Balance |
| Creep at nominal Load in 30 Minutes | 0,02% | Kriechen bei Nennlast in 30 Minuten |
| DC Voltage Range | 18VDC | DC-Spannungsbereich |
| Insulation Resistance | >5000MΩ | Isolationswiderstand |
| SAFE OVERLOAD (% of Full Scale) | 150% | Überlastschutz (% vom Endwert) |
| ULTIMATE OVERLOAD (% of Full Scale) | >300% | Bruchlast (% vom Endwert) |
| Deflection at nominal Load | 0,4mm | Nennmessweg |

| | | |
|----------|-----------------------|-------|
| Cable | | Kabel |
| Length | 3m | Länge |
| Diameter | 5mm | Ø |
| Cores | 4x0,20mm ² | Adern |



| Shield/Schirm | | |
|---------------|--------|---------|
| Signal + | green | grün |
| Signal - | white | weiss |
| Excitation + | red | rot |
| Ref./Sense+ | blue | blau |
| Excitation- | black | schwarz |
| Ref./Sense- | yellow | gelb |

