

Scherstabwägezelle SHEAR BEAM LOAD CELL

FTL



Nennlast: **300, 500, 1000, 2000 kg**

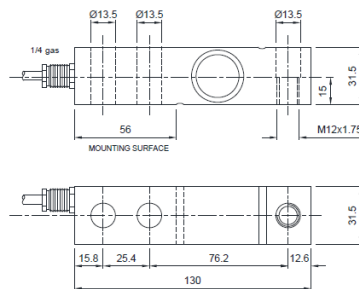
Optionen:



- WÄGEZELLE aus 17-4PH Edelstahl
- Kombinerter Fehler $\pm 0,017\%$ F.S.
- Schutzart IP 68
- 17-4 PH STAINLESS STEEL
- COMBINED ERROR $\pm 0,017\%$ F.S.
- PROTECTION CLASS IP 68

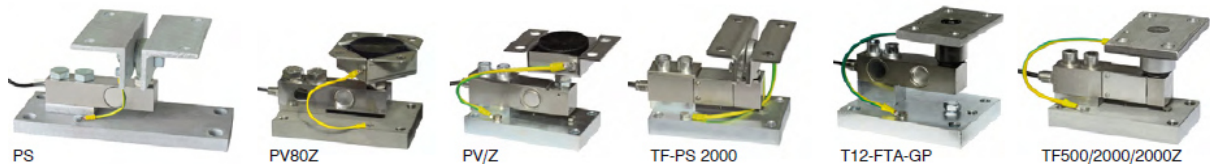
OIML R60 C3 APPROVED
FTK 1000 to 5000 kg: OIML R60 C3 APPROVED

ATEX approved Ex II 1 G Ex II 2 D (zone 0-1-2-21-22)



500	3000
1000	5000
2000	
M12 x 1.75	M20 x 2.5
Ø 13.5	Ø 22
8	6
53	74
76.2	95.3
130	171.5
25.4	38.1
32	38.1
2	2
Ø 13	Ø 20
...	19

Einbaumodule

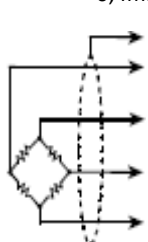


technical Features

technische Daten

Rated Output	2mV/V	Wägezellenspannung
Temperature Effect on Zero	0,002%/°C	TK Nullpunkt
Temperature Effect on Span	0,0012%/°C	TK Bereich
Compensated Temperatur Range	-10°C +40°C	Nenntemperaturbereich
Operating Temperature Range	-30°C +40°C	Betriebstemperaturbereich
Input Resistance	400Ω	Input Resistance
Output Resistance	350Ω	Output Resistance
Zero Balance	+/- 2%	Zero Balance
Creep at nominal Load in 30 Minutes	0,03%	Kriechen bei Nennlast in 30 Minuten
DC Voltage Range	12-30VDC	DC-Spannungsbereich
Insulation Resistance	>2000MΩ	Isolationswiderstand
SAFE OVERLOAD (% of Full Scale)	150%	Überlastschutz (% vom Endwert)
ULTIMATE OVERLOAD (% of Full Scale)	>200%	Bruchlast (% vom Endwert)
Deflection at nominal Load	0,4mm	Nennmessweg

Cable		Kabel
Length	3m	Länge
Diameter	6mm	Ø
Cores	6x0,20mm ²	Adern

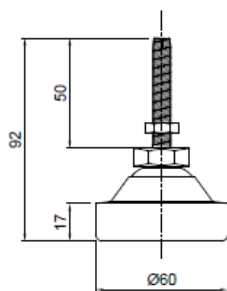


Shield		Schirm
Signal +	green	Signal +
Excitation +	rot	Speise +
Sense +	blau	Sense +
Signal -	white	Signal -
Excitation -	black	Speise -
Sense -	yellow	Sense -

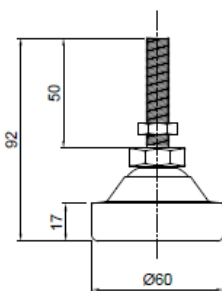
Selbstzentrierende Lastfüße



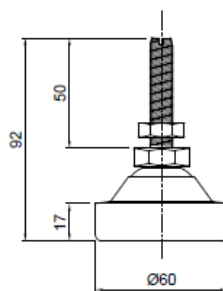
PIEDINOSB2M8
M8x1.25



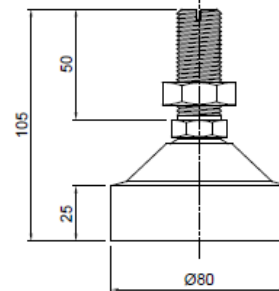
PIEDINOSB2M10
M10x1.5



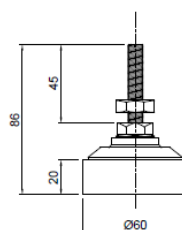
PIEDINOSB2INOX
M12x1.75



PIEDINOSB2M20
M20x2.5



PIEDINOSB2ZNC
M12x1.75



PIEDINOSB2ZNCM20
M20x2.5

